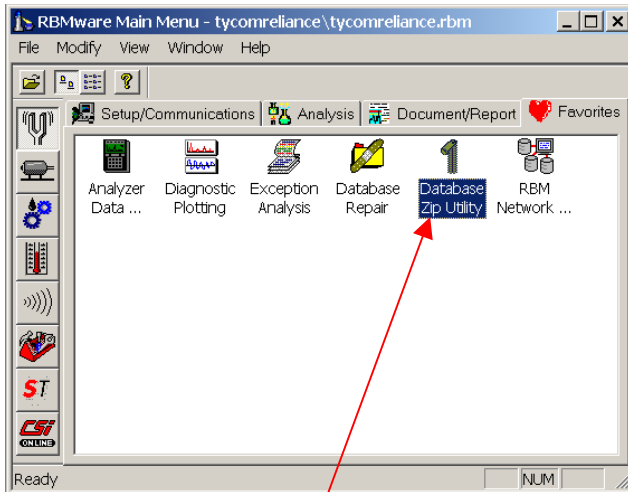
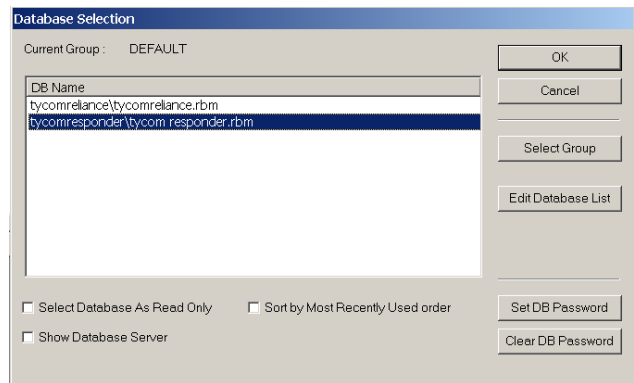


ZIPPING A DATABASE

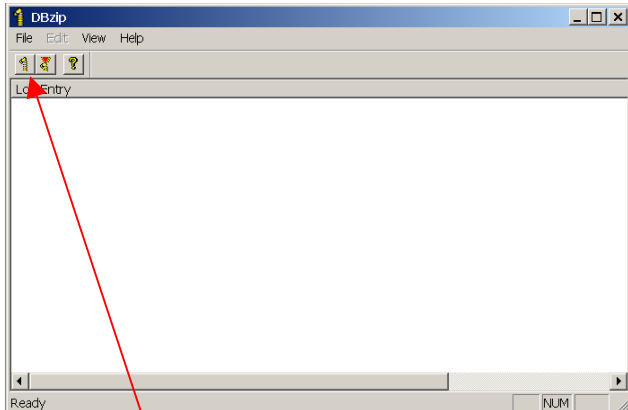
USING RBMWARE'S DATABASE ZIP UTILITY



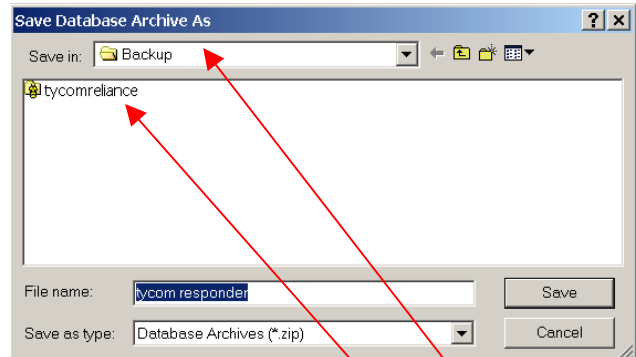
1. Open the CSI RBMware software program on your computer.
2. Click on **Database Zip Utilities** under the ♥ **Favorites** tab.



4. The above 'Database Selection' window will open.
5. Click on the name of the database (your ship's name) to highlight the file to zip.
6. Click the **OK** button.



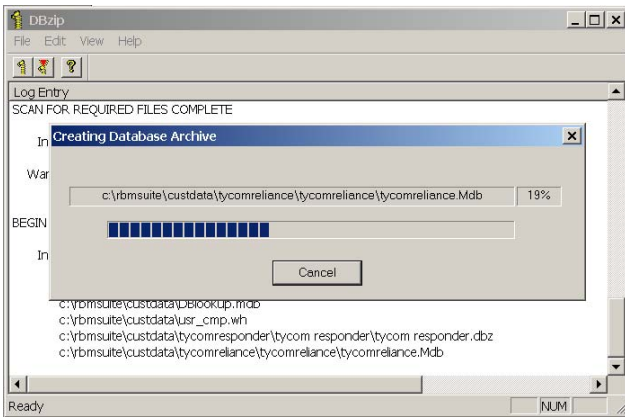
3. Once the DBzip window appears, click on the 'zipper' icon in the upper left hand corner.



7. The above 'Save Database Archive As' window will appear.
8. Make sure that the folder in the 'Save in:' box says "Backup" and the file name is that of your ship. Correct as needed.
9. Click the **Save** button.

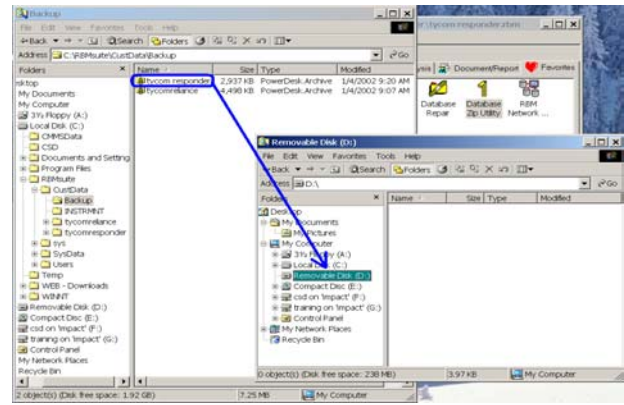
Note: The 'Backup' folder is located under the RBMsuite folder in 'CustData' folder.

ZIPPING A DATABASE (CONT.)



10. The database will automatically zip and save under the Backup folder under the **RBMsuite/CustData** folder.

Note: Zipping takes a few seconds the first few times, but as the database size grows after collecting more data, the time it takes to zip the database will increase.

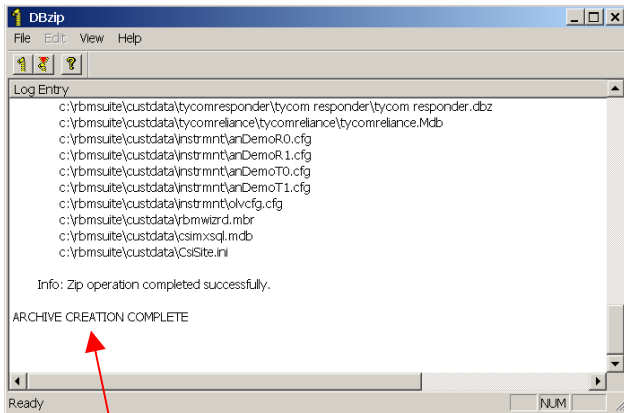


13. Open **Windows Explorer** on the desktop of your computer.

14. Highlight the zip file you just created under **RBMsuite\CustData\Backup**.

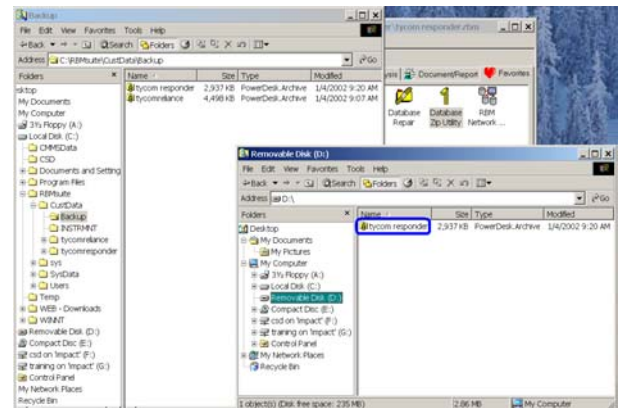
15. Copy to your clipboard by using the **"COPY"** function (Ctrl C).

16. Now, insert a **ZIP Disk** into your Zip Drive.



11. The above screen will appear when the database has been zipped. 'Archive Creation Complete' will show at the bottom of the screen.

12. At this time you may close out of the DBzip program.



17. Click on your Zip Drive (usually named **"Removable Disk"**) in Windows Explorer.

18. Paste the file you just copied using the **"PASTE"** function (Ctrl P).

19. The zip file copied from the Backup folder should now appear on the ZIP Disk.

20. Remove the **ZIP Disk** and send it to IMPACT for analysis.