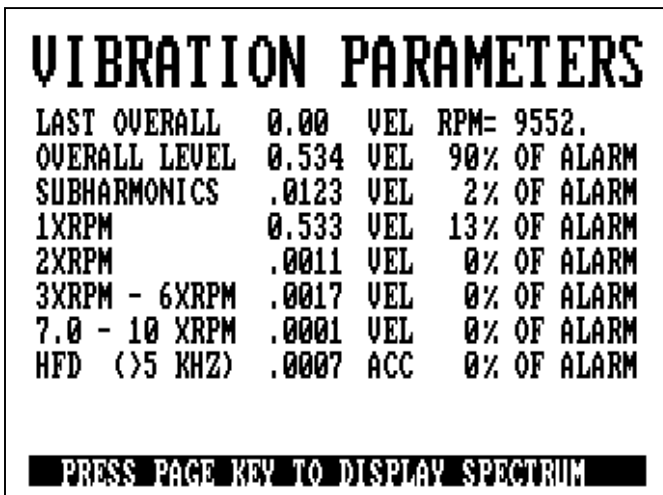


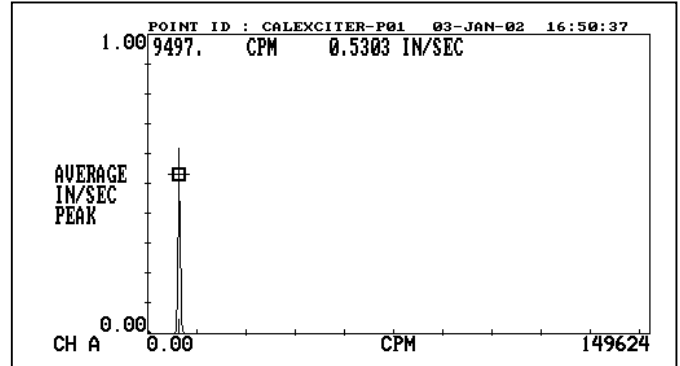
REVIEWING DATA ON THE ANALYZER

USING THE CSI 2117 MACHINERY ANALYZER

1. Continuing from the last step in Taking Data on a Machine... you can view the vibration data on the 2117 Analyzer.
2. Press the **Page Down** button to view the Vibration Parameters.



3. From here you can view the Spectrum by pressing the **Page Down** button again.
4. When viewing the Spectrum, you can use the left ⇐ and right ⇒ buttons to move the cursor.



5. Moving the cursor will allow you to pinpoint the RPM and Velocity at a specific peak. Press the **MARK** key to pinpoint the exact RPM.
6. Use the **EXP** button to “zoom in” on the screen.
7. Press the **Page Down** button.
8. This brings you to the Time Waveform screen as noted in the plot below.

