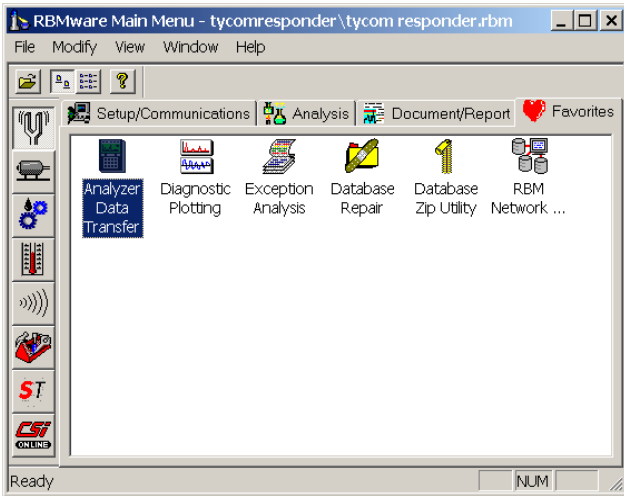
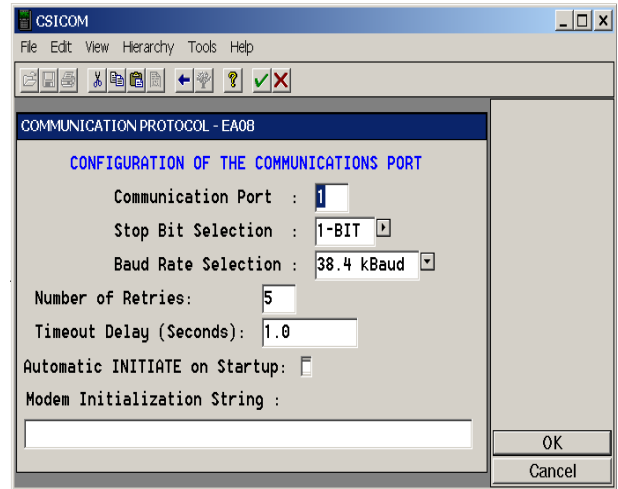


DATABASE LOADING SUMMARY

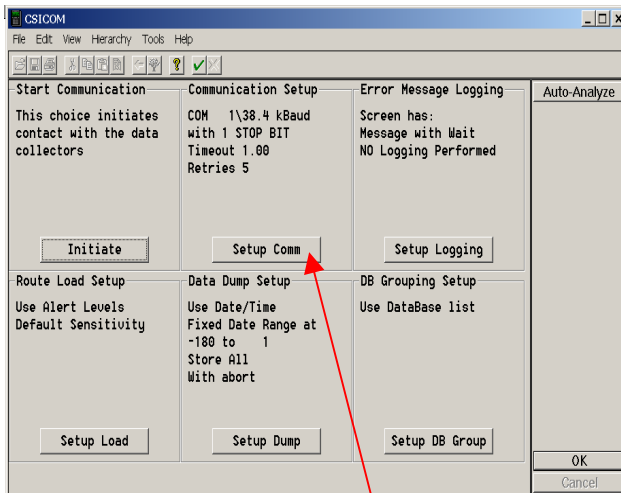
TRANSFERRING THE DATABASE TO THE CSI 2117 MACHINERY ANALYZER FROM YOUR COMPUTER



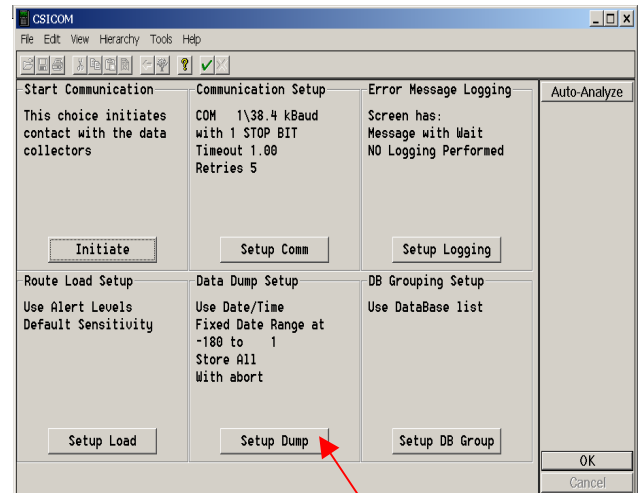
1. Open the CSI RBMware software program on your computer.
2. Click on **Analyzer Communications** under the ♥**Favorites** tab.



4. Verify that the correct Communications Port is being used (the one in which you have connected the communications cable from the CSI 2117 Analyzer).
5. Verify that the Baud Rate is the same as it is on the CSI 2117 Analyzer (should always be 38.4 kBaud).
6. Click **OK** to accept defaults or changes.

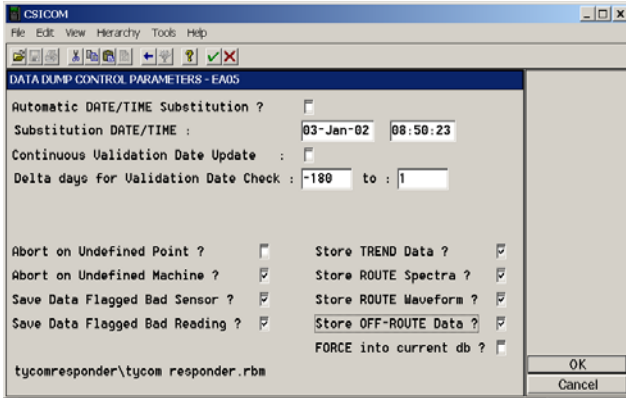


3. Click on **Setup Comm**.

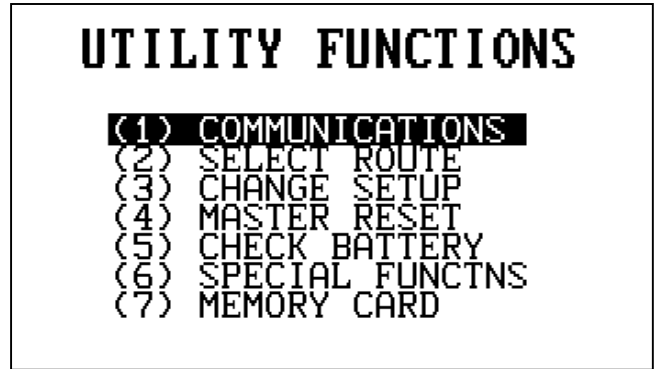


7. Click on **Setup Dump**.

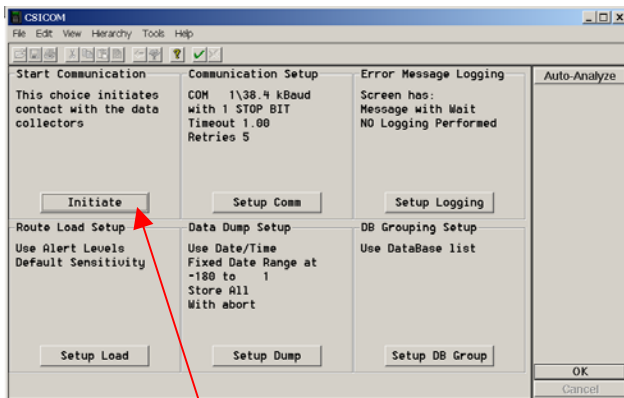
DATABASE LOADING SUMMARY (CONT.)



8. Verify that the current date and time are present (uses your computer's current date and time - to change it, change your computer settings).
9. Check to see that the Delta days for Validation Date Check begins at "-180".
10. Make sure that the default boxes are checked.
11. Click **OK** to accept defaults or changes.

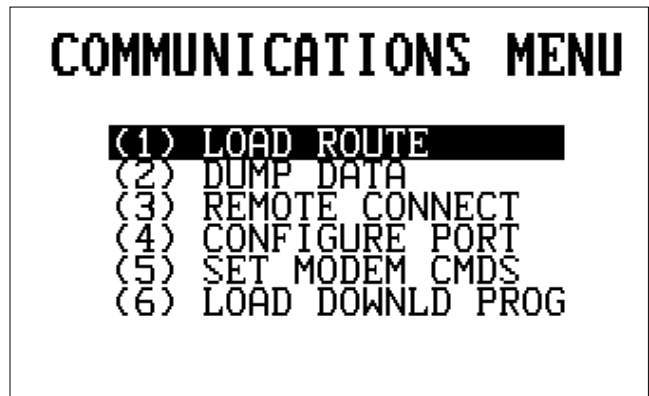


13. Turn the CSI 2117 Analyzer on.
14. Press the **Utilities** button.
15. Scroll using the up ↑ and down ↓ buttons, highlight "**COMMUNICATIONS**".
16. Press the **Enter** button.



12. Click on **Initiate**.

Now, looking at your CSI 2117 Analyzer



17. Using the up ↑ and down ↓ buttons, again highlight "**LOAD DATA**".
18. Press the **Enter** button.

DATABASE LOADING SUMMARY (CONT.)

LOAD ROUTE

DELETE ALL ROUTES : **NO**

PRESS ENTER TO
INITIATE ROUTE LOAD

19. Note: Continue **ONLY** if you have dumped the last set of data acquired to your computer first (this next step will delete all data stored in your analyzer).

20. When prompted to “**DELETE ALL ROUTES**”, press the right ⇨ arrow button so that it reads “**YES**” and press the **Enter** button.

21. Press the right ⇨ arrow button again to choose “**YES**” and press the **Enter** button again.

SELECT DATABASE

*** MULTIPLE ROUTE LOAD ***
D-BASE SET UP NOW IN MT
*RELIANCE.DAT

PRESS F6 TO SPECIFY USER DATABASE

22. Scroll to the top using the up ↑ button and highlight “**MULTIPLE ROUTE LOAD**”.

23. Press the **Enter** button.

**No Picture is Available
For this Screen**

24. Select “**ABS MACH.MRL**”.

25. Press the **Enter** button.

26. The Database will automatically load onto the CSI 2117 Analyzer.

27. Repeat the Multiple Route Load (MRL) steps # 22 - #23 to load the two remaining routes: **NON ABS.MRL** and **CABLE.MRL**

28. You are now ready to begin taking Vibration Data. Select the correct Route and Press the **RESET** key.