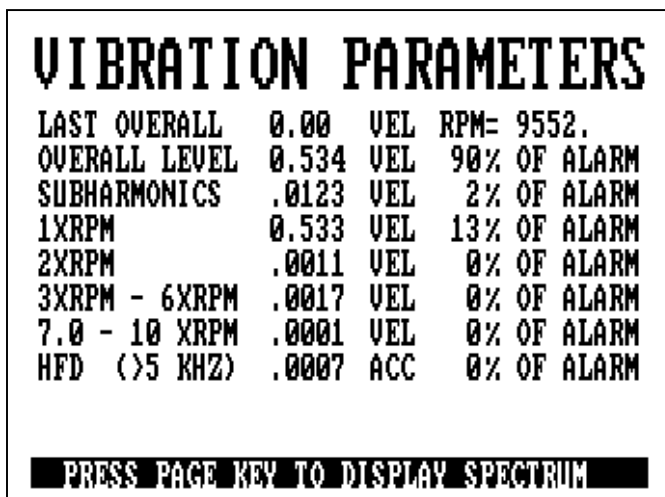


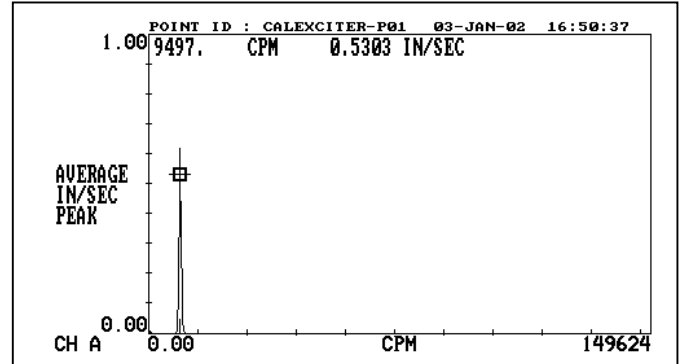
REVIEWING DATA ON THE ANALYZER

USING THE DISPLAY ON THE ANALYZER

1. Continuing from the last step in **Taking Data on a Machine...** you can view the vibration data on the Analyzer.
2. Press the **Page Down** button (on 2115 Analyzer) or **F3** key (on 2120 Analyzer) to view the Vibration Parameters.



3. From here you can view the Spectrum by pressing the **Page Down** button (on 2115 Analyzer) again or **F4** key (on 2120 Analyzer).
4. When viewing the Spectrum, you can use the left \leftarrow and right \rightarrow buttons to move the cursor.



5. Moving the cursor will allow you to pinpoint the RPM and Velocity at a specific peak. Press the **MARK** key to pinpoint the exact RPM.
6. Use the **EXP** button to “zoom in” on the screen.
7. Press the **Page Down** button to view the waveform.
8. This brings you to the Time Waveform screen as noted in the plot below.

