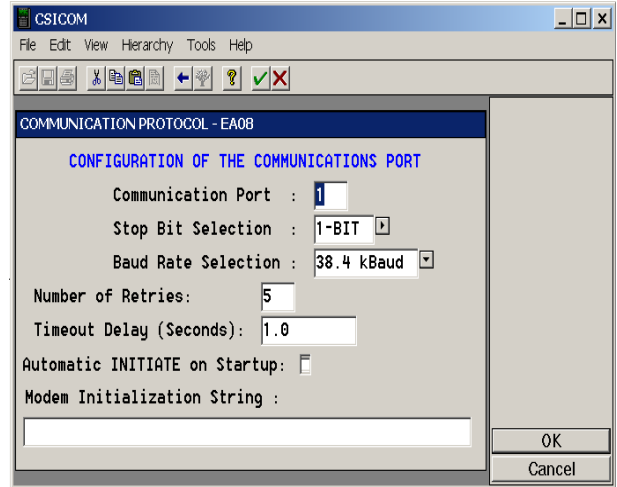


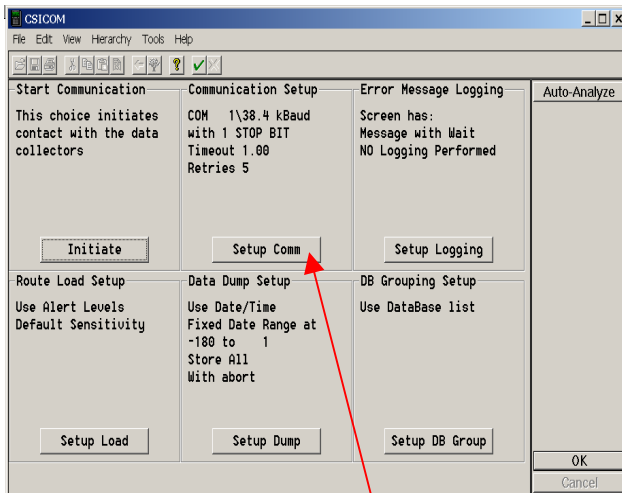
# DATABASE LOADING SUMMARY

## TRANSFERRING THE DATABASE TO THE ANALYZER FROM YOUR COMPUTER

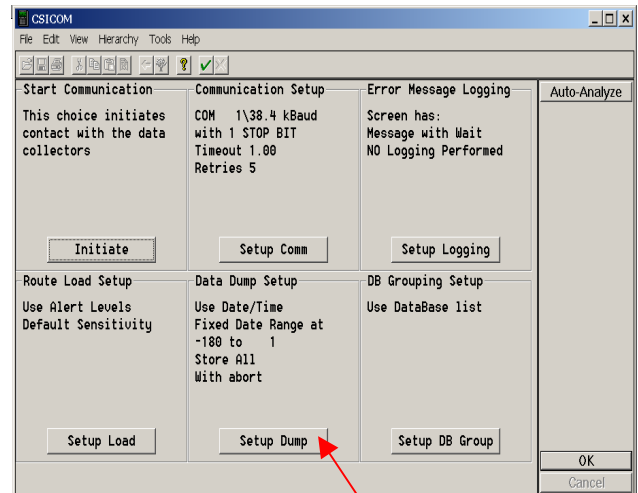


1. Open the MasterTrend software program on your computer.
2. Click on **Analyzer Communications**.

4. Verify that the correct Communications Port is being used (the one in which you have connected the communications cable from the Analyzer).
5. Verify that the Baud Rate is the same as it is on the Analyzer (should always be 38.4 kBaud).
6. Click **OK** to accept defaults or changes.

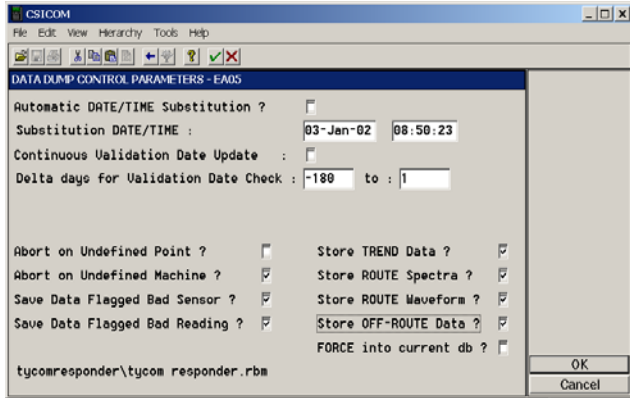


3. Click on **Setup Comm**.

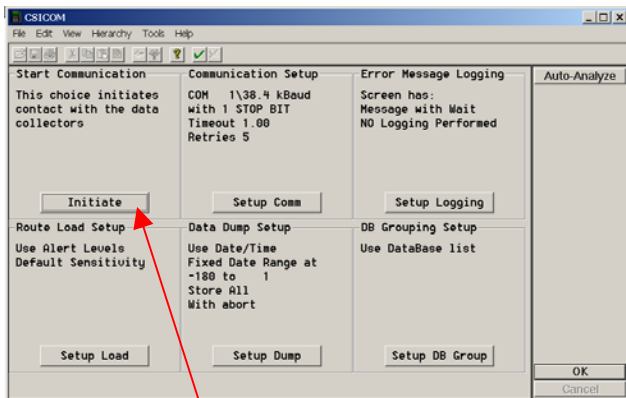


7. Click on **Setup Dump**.

# DATABASE LOADING SUMMARY (CONT.)



8. Verify that the current date and time are present (uses your computer's current date and time - to change it, change your computer settings).
9. Check to see that the Delta days for Validation Date Check begins at "-180".
10. Make sure that the default boxes are checked.
11. Click **OK** to accept defaults or changes.



12. Click on **Initiate**.

**Now, looking at your Analyzer...**

## UTILITY FUNCTIONS

- (1) COMMUNICATIONS
- (2) SELECT ROUTE
- (3) CHANGE SETUP
- (4) MASTER RESET
- (5) CHECK BATTERY
- (6) SPECIAL FUNCTNS
- (7) MEMORY CARD

13. Turn the Analyzer on.
14. Press the **Utilities** button.
15. Scroll using the up ↑ and down ↓ buttons, highlight "**COMMUNICATIONS**".
16. Press the **Enter** button.

## COMMUNICATIONS MENU

- (1) LOAD ROUTE
- (2) DUMP DATA
- (3) REMOTE CONNECT
- (4) CONFIGURE PORT
- (5) SET MODEM CMDS
- (6) LOAD DOWNLD PROG

17. Using the up ↑ and down ↓ buttons, again highlight "**LOAD ROUTE**".
18. Press the **Enter** button.

## DATABASE LOADING SUMMARY (CONT.)

### LOAD ROUTE

DELETE ALL ROUTES : **NO**

PRESS ENTER TO  
INITIATE ROUTE LOAD

19. Note: Continue **ONLY** if you have dumped the last set of data acquired to your computer first (this next step will delete all data stored in your analyzer).

20. When prompted to “**DELETE ALL ROUTES**”, press the right ⇨ arrow button so that it reads “**YES**” and press the **Enter** button.

21. Press the right ⇨ arrow button again to choose “**YES**” and press the **Enter** button again.

### SELECT DATABASE

**\* MULTIPLE ROUTE LOAD \***

D-BASE SET UP NOW IN MI

**\*BT ALASKA.DAT**

**PRESS F6 TO SPECIFY USER DATABASE**

22. Scroll to the top using the up ↑ button and highlight “**MULTIPLE ROUTE LOAD**”.

23. Press the **Enter** button.

**No Picture is Available  
For this Screen**

24. The Database will automatically load onto the Analyzer.

25. When the load is complete - You are now ready to begin taking Vibration Data. Select the correct Route and Press the **RESET** key.